



# *Instruction Manual*

**SLC-BKPK**



**SLC-BKPK MSRP: \$2,045.00**

**Spray Lining and Coatings**  
**WWW.Spray-lining.com - Phone 855-545-4900**



**CAUTION: DO NOT USE THE SPRAY LINING AND COATINGS TEXTURE SPRAYER UNTIL YOU HAVE FULLY READ AND UNDERSTOOD THE INSTRUCTION MANUAL AND ALL THE WARNING LABELS.**

**DO NOT USE THIS PRODUCT UNLESS YOU ARE WILLING TO OBSERVE ALL THE INSTRUCTIONS AND WARNING LABELS.**

**PRIOR TO EACH USE OF THE EQUIPMENT, CHECK ALL CONNECTIONS AND CHECK FOR WORN PARTS. REPLACE IF NECESSARY WITH SPECIFIED PARTS. DO NOT MODIFY THIS PRODUCT IN ANY MANNER. DOING SO COULD RESULT IN SERIOUS INJURY.**

**U.S. and Foreign Patents Pending**

## CAUTION

**CAUTION: DON'T USE THE SLCBKPK™ UNTIL YOU HAVE FULLY READ AND UNDERSTOOD THE INSTRUCTION MANUAL AND ALL WARNING LABELS.**

**DO NOT USE THIS PRODUCT UNLESS YOU ARE WILLING TO OBSERVE THESE INSTRUCTIONS AND WARNING LABELS.**

**PRIOR TO EACH USE OF THE SLCBKPK™ CHECK ALL CONNECTIONS AND CHECK FOR WORN PARTS. REPLACE IF NECESSARY WITH SPECIFIED SLCBKPK™ PARTS ONLY.**

**DO NOT MODIFY THIS PRODUCT IN ANY MANNER. DOING SO COULD RESULT IN SERIOUS INJURY.**

U.S. & Foreign Patents Pending

## WARNING!

**DO NOT EXCEED AN INLET AIR PRESSURE OF 120 PSI. DOING SO COULD RESULT IN COMPONENT FAILURE AND POSSIBLE INJURY.**



**CUIDADO: NO UTILICE LA HASTA QUE HAYA LEÍDO Y COMPENDIDO EN SU TOTALIDAD EL MANUAL DE INSTRUCCIONES Y TODAS LAS ETIQUETAS DE ADVERTENCIA.**

**NO UTILICE ESTE PRODUCTO A MENOS QUE ESTÉ DISPUESTO A RESPETAR TODAS LAS INSTRUCCIONES Y ETIQUETAS DE ADVERTENCIA.**

**ANTES DE CADA USO DE LA REVISE TODAS LAS CONEXIONES Y VERIFIQUE QUE NO TENGA PIEZAS DESGASTADAS. SI ES NECESARIO, REEMPLÁCELAS CON LAS PIEZAS SLCBKPK™ ESPECIFICADAS. NO MODIFIQUE DE NINGUNA MANERA ESTE PRODUCTO. HACERLO PODRÍA CAUSAR LESIONES GRAVES.**

**Patentes de los E.U.A y en el extranjero pendientes**

## CAUTION

**CAUTION: DON'T USE THE SLCBKPK™ UNTIL YOU HAVE FULLY READ AND UNDERSTOOD THE INSTRUCTION MANUAL AND ALL WARNING LABELS.**

**DO NOT USE THIS PRODUCT UNLESS YOU ARE WILLING TO OBSERVE THESE INSTRUCTIONS AND WARNING LABELS.**

**PRIOR TO EACH USE OF THE SLCBKPK™ CHECK ALL CONNECTIONS AND CHECK FOR WORN PARTS. REPLACE IF NECESSARY WITH SPECIFIED SLCBKPK™ PARTS ONLY.**

**DO NOT MODIFY THIS PRODUCT IN ANY MANNER. DOING SO COULD RESULT IN SERIOUS INJURY.**

U.S. & Foreign Patents Pending

## WARNING!

**DO NOT EXCEED AN INLET AIR PRESSURE OF 120 PSI. DOING SO COULD RESULT IN COMPONENT FAILURE AND POSSIBLE INJURY.**



**ATTENTION : NE PAS UTILISER LE PULVÉRISATEUR SLCBKPK™ AVANT D'AVOIR ENTIÈREMENT LU ET COMPRIS LE MODE D'EMPLOI ET TOUTES LES ÉTIQUETTES DE MISE EN GARDE.**

**NE PAS UTILISER CE PRODUIT À MOINS D'ÊTRE PRÊT À RESPÉCTER TOUTES LES INSTRUCTIONS ET ÉTIQUETTES DE MISE EN GARDE.**

**AVANT CHAQUE UTILISATION DE LE SLCBKPK™, VÉRIFIER TOUS LES RACCORDES ET CONTRÔLER L'ÉTAT D'USURE DES PIÈCES. LE CAS ÉCHÉANT, REMPLACER PAR DES PIÈCES SLCBKPK™ PRÉCONISÉES. NE MODIFIER CE PRODUIT D'AUCUNE FAÇON. CECI POURRAIT RÉsulTER EN DES BLESSURES GRAVES.**

**Brevets en instance aux États-Unis et dans d'autres pays**

## CAUTION

**CAUTION: DON'T USE THE SLCBKPK™ UNTIL YOU HAVE FULLY READ AND UNDERSTOOD THE INSTRUCTION MANUAL AND ALL WARNING LABELS.**

**DO NOT USE THIS PRODUCT UNLESS YOU ARE WILLING TO OBSERVE THESE INSTRUCTIONS AND WARNING LABELS.**

**PRIOR TO EACH USE OF THE SLCBKPK™ CHECK ALL CONNECTIONS AND CHECK FOR WORN PARTS. REPLACE IF NECESSARY WITH SPECIFIED SLCBKPK™ PARTS ONLY.**

**DO NOT MODIFY THIS PRODUCT IN ANY MANNER. DOING SO COULD RESULT IN SERIOUS INJURY.**

U.S. & Foreign Patents Pending

## WARNING!

**DO NOT EXCEED AN INLET AIR PRESSURE OF 120 PSI. DOING SO COULD RESULT IN COMPONENT FAILURE AND POSSIBLE INJURY.**

## Assembly



**1** Attach hose assembly to tank out-let. Thread hose fitting into bottom cap until tight.



**2** Insert the coiled blue air hose into the push-lock fitting in the bottom of the pneumatic assembly cover until it locks in place.



**3** Attach hose assembly to the bottom inlet of gun. Tighten by hand. DO NOT OVER TIGHTEN.



**4** Connect the quick-disconnect coupler into the back of the gun.



**5** Place bottom of tank over backpack support bar and lock straps. Ensure the pneumatic assembly faces the right side. Tighten straps until there is a secure fit.



**6** Cut one end of the fill hose  $\frac{1}{2}$ " deep length-wise and connect this end of the fill hose to the outlet of your mud pump. Tighten clamp with screw driver.

## Priming the Unit



**1** Flip toggle switch to FILL/OFF. To remove the top cap, begin by loosening the top bolts 1-2 turns.



**2** Next, while pulling and holding the top cap release pin up (red), turn the top cap counter clockwise until it stops. Lift up on the cap to remove.

**NOTE:** YOU MAY FEEL SUBSTANTIAL RESISTANCE THE FIRST TIME YOU TRY TO TWIST THE TOP CAP. THIS IS CAUSED BY THE SEAL LUBRICANT THAT WAS APPLIED PRIOR TO SHIPPING. THIS IS NORMAL.



**3** Remove piston by squeezing the gun trigger and pulling upward on the piston handle.



**4** Next, fill the tank  $\frac{3}{4}$  full by pouring material into the top of the tank. Insert piston into tank and push down until it is situated on top of the liquid. A slight twisting or rocking motion may be necessary to release the air trapped between the piston and the liquid.



**5** Place top cap back onto the tank. Once the top cap is securely in place, push down the lock release to ensure a tight fit.

# Spraying



**1** Ensure the fill/spray toggle switch is in the FILL/OFF position and that the mud flow control is turned all the way in the counterclockwise direction. Finally, make sure the air flow control on the gun is turned to the off position.



**2** Connect the air compressor hose to the male air inlet on the pneumatic assembly. Set the air compressor and adjust as desired. **DO NOT EXCEED 160 PSI.**



**3** Once the air compressor hose is connected, put the backpack on. There are several adjustments that can be made to the straps to ensure a comfortable, snug fit. Once the backpack is in a secure and comfortable position, flip the fill/spray toggle switch to **SPRAY** and adjust the gun airflow by opening the ball valve at the base of the gun.



**4** While holding down the trigger of the gun, begin adjusting the flow. Simply lift and turn the flow control in a clockwise direction to increase flow and turn counterclockwise to decrease flow. Test spray first by spraying some material onto a scrap sheet of material.



**5** Once the desired flow is achieved, lock the flow control by pushing the outer portion of the dial back down.

You are now ready to use the SLCBKPK™

**NOTE:** There are several adjustments that can be made to the SLCBKPK, and the compressor to get the texture of spray you desire.

- The more open the trigger; the more material will be applied with a resulting coarser pattern.
- The higher the air pressure, the finer the pattern; the lower the air pressure, the coarser the pattern.
- The higher the air flow, the finer the pattern; the lower the air flow, the coarser the pattern.
- Larger orifice openings will produce a coarser pattern than will a smaller opening.
- The more open the flow control on the SLCBKPK™, the more that will be applied.

To apply **orange peel**: select the smallest opening (#6) in the orifice plate, set the trigger so that the end of the air nozzle is approximately 1/8" (3.18 mm) from the orifice plate. Air pressure should be over 80 psi. Again, before spraying the finished product, check for the desired texture

# Refilling *WITHOUT* Pump



**1** Remove the tank from your back and place on a secure, level surface.



**2** Flip the fill/spray toggle switch to the FILL position.



**3** Pull upward on the red lock to relieve the built up air pressure. Ensure all air pressure has been released before moving to the next step.



cap to remove.

**4** To remove the top cap, begin by loosening the top bolts 1-2 turns. Next, while holding the red lock release up, turn the top cap counter clockwise until it stops. Lift up on the



**5** Remove piston by squeezing the gun trigger and pulling upward on the handle.



**6** Next, fill the tank  $\frac{3}{4}$  full of liquid. Insert piston into tank and push down until it is situated on top of the liquid. A slight twisting or rocking motion may be necessary to release

the air trapped between the piston and the liquid.



**7** Place top cap back onto the tank by positioning over the top bolts and twisting clockwise. Once the top cap is securely in place, push down the lock release to ensure a tight fit.

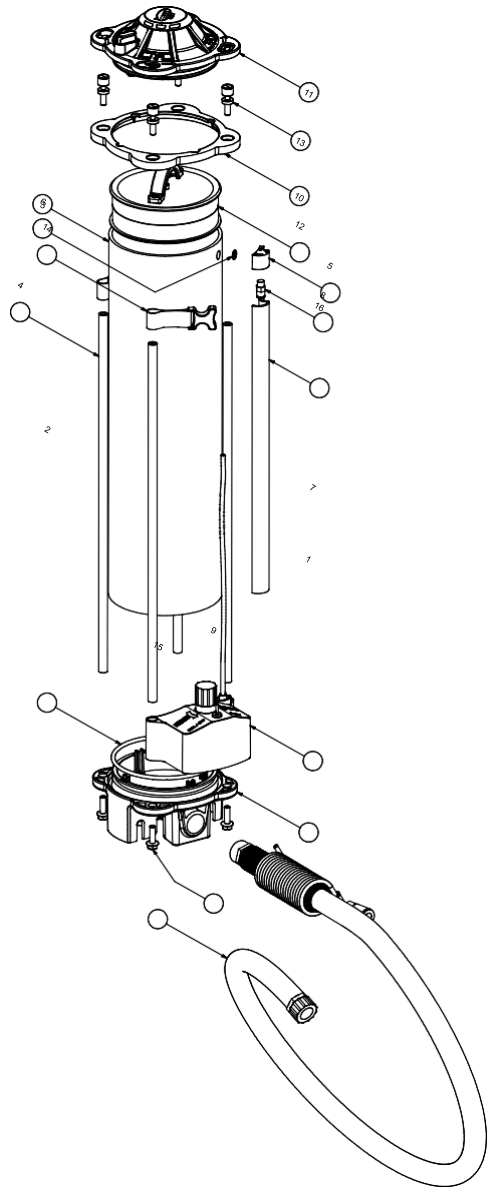
Tighten top bolts as necessary.

## Maintenance

Regularly inspect your SLCBKPK™ to ensure all major components are free of damage and are in good working condition. Replace all worn or damaged components with the appropriate repair part as indicated. Re-lubricate the piston seals and cap o-rings after cleaning.

After cleaning and re-lubrication, cycle the piston up and down while twisting the piston by hand within the tank to ensure a good seal between the piston seals and tank walls.

## Replacement Parts





# Replacement Parts / Partes de repuesto / Pièces de rechange



10401  
Backpack  
Assembly,  
Ensamble de  
la mochila,  
Sac à dos



10402  
Piston  
Assembly,  
Ensamble del  
pistón,  
Piston



10403  
Top Cap  
Assembly,  
Ensamble de  
latapa superior,  
Capuchon  
supérieur



10404  
Pneumatic  
Assembly,  
Ensamble  
neumático,  
Système  
pneumatique



10406  
Hose Kit,  
Juego de  
manguera de  
pasta,  
Trousse tuyau  
à enduit



10407  
Filling Hose Kit,  
Juego de  
manguera  
de llenado,  
Trousse tuyau de  
remplissage



10408  
Top Cap  
Bolt Set,  
Tornillos para la  
tapa superior,  
Boulonnerie de  
capuchon supérieur



10409  
Hose Barbed  
Fitting,  
Adaptador  
dentado  
para manguera  
de pasta,  
Raccord cannelé  
tuyau à enduit



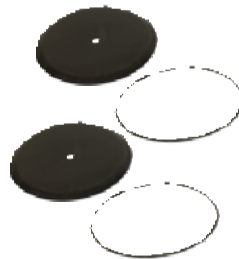
10410  
Total Hose Kit,  
Juego de  
manguera completo,  
Trousse tuyaux  
complète



10411  
Backpack Tank  
Straps,  
Correas deltanque  
para mochila,  
Sangles de réservoir  
pour sac à dos



10412  
Fill Plug,  
Tapón de  
llenado,  
Bouchon de  
remplissage

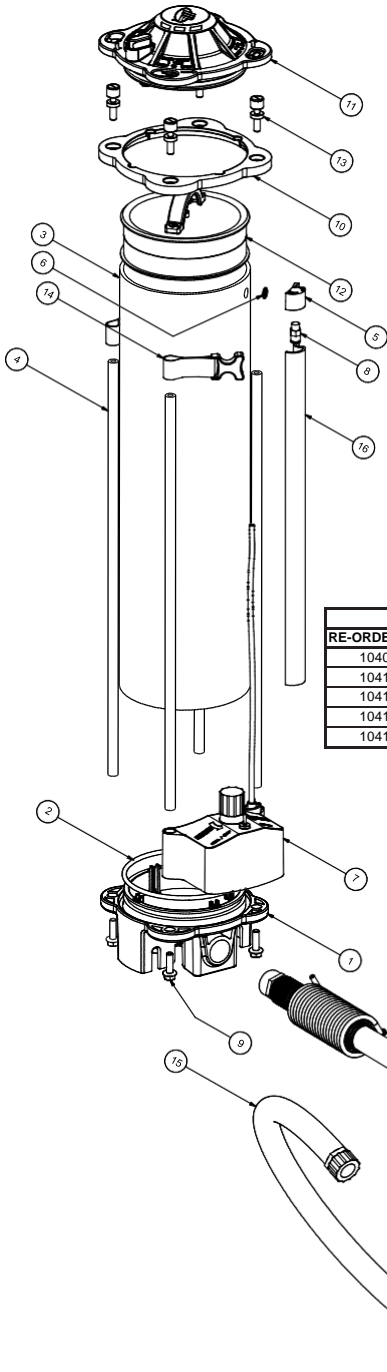


10413  
Seal Kit,  
Juego de  
sellos,  
Trousse  
d'étanchéité



10415  
Replacement Caps,  
Tapas de repuesto,  
Capuchons de  
rechange

# Replacement Parts / Partes de repuesto / Pièces de rechange

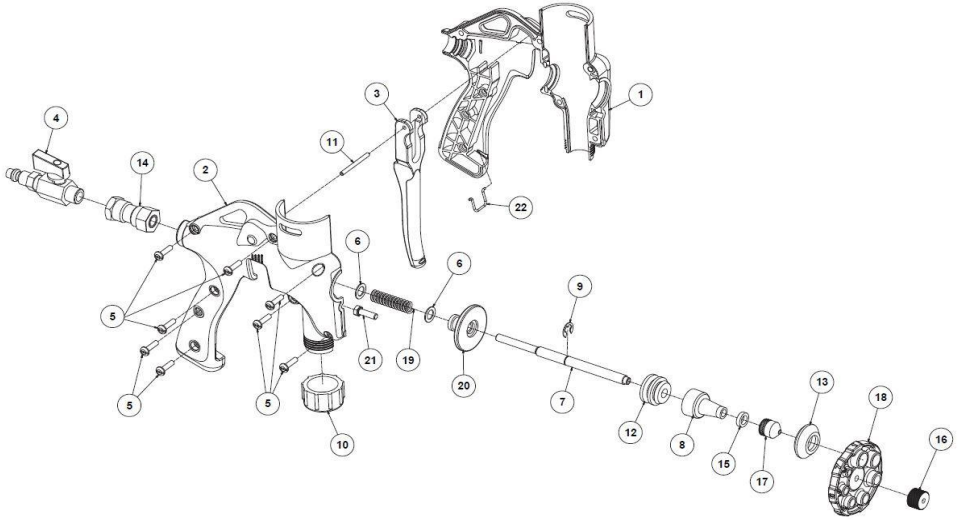


DET.	QTY.	DESCRIPTION	RE-ORDE
1	1	BOTTOM CAP	-
2	2	CAP O-RING	-
3	1	TANK	-
4	4	TIE ROD	-
5	1	TANK AIR MANIFOLD	-
6	1	TANK AIR MANIFOLD O-RING	-
7	1	PNEUMATIC ASSEMBLY	10404
8	1	AIR TUBE FITTING	-
9	4	BOTTOM CAP BOLT	-
10	1	TOP CLAMPING CAP	-
11	1	TOP CAP ASSEMBLY	10403
12	1	PISTON ASSEMBLY	10402
13	4	TOP CAP CLAMPING STUD	10408
14	2	BACKPACK TANK STRAP	10411
15	1	HOSE ASSEMBLY	10406
16	1	AIR TUBE COVER	-
17	1	FILL HOSE ASSEMBLY	10407
18	1	BACKPACK ASSEMBLY	10401

OTHER RE-ORDER ITEMS		
RE-ORDER NO.	DESCRIPTION	PARTS INCLUDED
10409	HOSE BARBED FITTING	-
10410	TOTAL HOSE KIT	FILL HOSE ASSEMBLIES
10412	FILL PLUG KIT	PLUG, CAP, O-RING, & RETAINING RING
10413	SEAL KIT	(2) CAP O-RINGS & (2) PISTON SEALS
10415	REPLACEMENT CAPS	(2) CAPS



# Backpack Gun Replacement Parts



Item #	Description	Part No.	Qty Req'd
1	Handle Casting (Left)	WL220	1
2	Handle Casting (Right)	WL219	1
3	Trigger	WL217	1*
4	Ball Valve -Air Line Coupler	WT243	1
5	Screw M4 ´ 18	WT304	7
6	Copper Ring	WT223	2
7	Air Tube	WT136	1
8	Rubber Boot	WT222	1*
9	E-Clip Retainer	WT246	1*
10	Hose Cap	WT142	1*
11	Shaft	WT240	1
12	Front Bushing	WT231	1
13	Mixture Nozzle	WT236	1*
14	Rear Bushing	2025	1
15	Nylon ring	WT245	1
16	Center Knob	WT238	1*
17	Air Nozzle	WT237	1
18	Orifice Plate	WT218	1*
19	Compression Spring	WT210	1
20	Adjustment Knob	WL222	1*
21	Screw M5 X 16	WT303	1
22	Trigger Lock	WT137	1
23	45° Angled Hopper Adapter & Clamp	16229	1
24	Hopper Clamp	WT219	1



**SPRAY-LINING  
and COATINGS**

